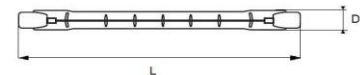
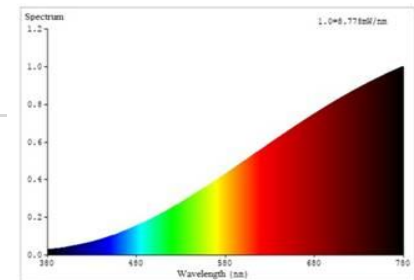


Order code	EAN	Packaging - SKU
047568-HLME1	4986149047568	PET Clamshell, 1 pc/SKU
Product		
Category	Halogen Lamp ECO	
Series	Linear	
Description	GP HL ES Linear R7S 120W 230-240V 78MM	
General description		
Energy label	C	
Lamp shape	Linear	
Lamp base	R7S	
Dimmable	Yes	
Mercury free	Yes	
Mercury content	0.0 mg	
Recycling	Yes	
Electrical characteristics		
Nominal wattage	120 W \pm 10%	
Rated wattage	120 W	
Equivalent incandescent lamp power	150 W	
Power factor	1.0	
Voltage	230-240 V	
Operating frequency	50/60Hz	
Lamp current	500-522 mA	
Weighted Energy Consumption	120 KWh / 1000 h	
Light technical characteristics		
Light colour	Warm White	
Colour temperature	2900 K \pm 150K	
Colour rendering index (Ra)	100	
Nominal luminous flux	2250 lm \pm 10%	
Rated luminous flux	2250 lm	
Lumen maintenance factor at end of life	0.75	
Warm-up time (60%)	< 0.2 s	
Starting time	< 0.2 s	
Lifespan		
Nominal life time	2000 h	
Rated lamp life time	2000 h	
Switching cycles	> 8000	
Product dimensions		
Overall length (L)	78 mm \pm 1 mm	
Diameter (D)	8 mm \pm 1 mm	
Warranty		
12 months from ex-factory date		



Spectral Distribution



GP Halogen Lamps *Energy Savers* are designed for direct replacement of conventional incandescent lamps and standard halogen lamps.

- Compatible shapes and sizes of corresponding GLS and standard halogen lamps
- Bright natural looking light for the entire home
- Save up to 30% energy
- Average life time up to 2000 hours
- Give 100% light output instantly
- Dimmable

Applications

- Domestic and commercial applications
- General illumination
- Can be used everywhere at home
- Use outdoors only in enclosed and ventilated luminaires.